

131

AN ORDINANCE ANNEXING CERTAIN TERRITORY TO THE
CITY OF URBANA, ILLINOIS

WHEREAS, it appears to the City Council of the City of Urbana, Illinois, that the following described unincorporated territory, containing less than sixty (60) acres, is wholly bounded by the municipality of the City of Urbana, in the County of Champaign and State of Illinois, and

WHEREAS, at least two-thirds of the aldermen of said City are of the opinion that it would be for the best interests of the people of the City of Urbana, Illinois, that said territory be annexed to, and made a part of the city limits of said City.

THEREFORE, BE IT ORDAINED BY THE CITY COUNCIL OF THE CITY OF URBANA, ILLINOIS:

SECTION 1. That the territory described as follows, to-wit:

Commencing at a point on the East side of Glover Avenue in the City of Urbana, Illinois, One Hundred Thirty-Seven (137) feet South of the South line of Main Street; thence South along the East right-of-way line of said Glover Avenue, which was the City limits that existed prior to the passage of this ordinance, to a point on the South line of Oregon Street in said City; thence East on the South line of Archie J. Hartle's First Subdivision Four Hundred Ninety-Three (493) feet, more or less, to the West line of territory annexed during this calendar month to the City of Urbana; thence North on said West line of said territory annexed this calendar month to said City, along the East boundary of Archie J. Hartle's First and Third Subdivision, to the Center line of Main Street extended; thence West along said Center line of Main Street extended on the City limits which existed prior to the passage of this ordinance, to the East line of said Glover Avenue extended North; thence South to the South line of Main Street, thence East Sixty (60) feet, thence South One Hundred Thirty-Seven (137) feet to the North line of Lot 6 of Archie J. Hartle's Second Subdivision, thence West Sixty (60) feet to the place of beginning, all situated in the County of Champaign and State of Illinois.

be, and the same is hereby annexed to, and shall hereafter be a part of the City of Urbana, Illinois, and that the corporate limits of said City be and the same shall be changed so as to include said territory within the corporate limits of said City.

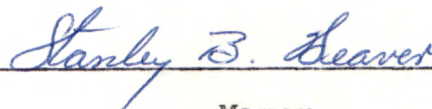
SECTION 2. The City Clerk of the City of Urbana, Illinois, shall record with the Recorder of Deeds of the County of Champaign, Illinois, a copy of this ordinance, together with an accurate map of the annexed territory.

Adopted by the City Council of the City of Urbana, Illinois, this 21st day of April, A.D. 1958.



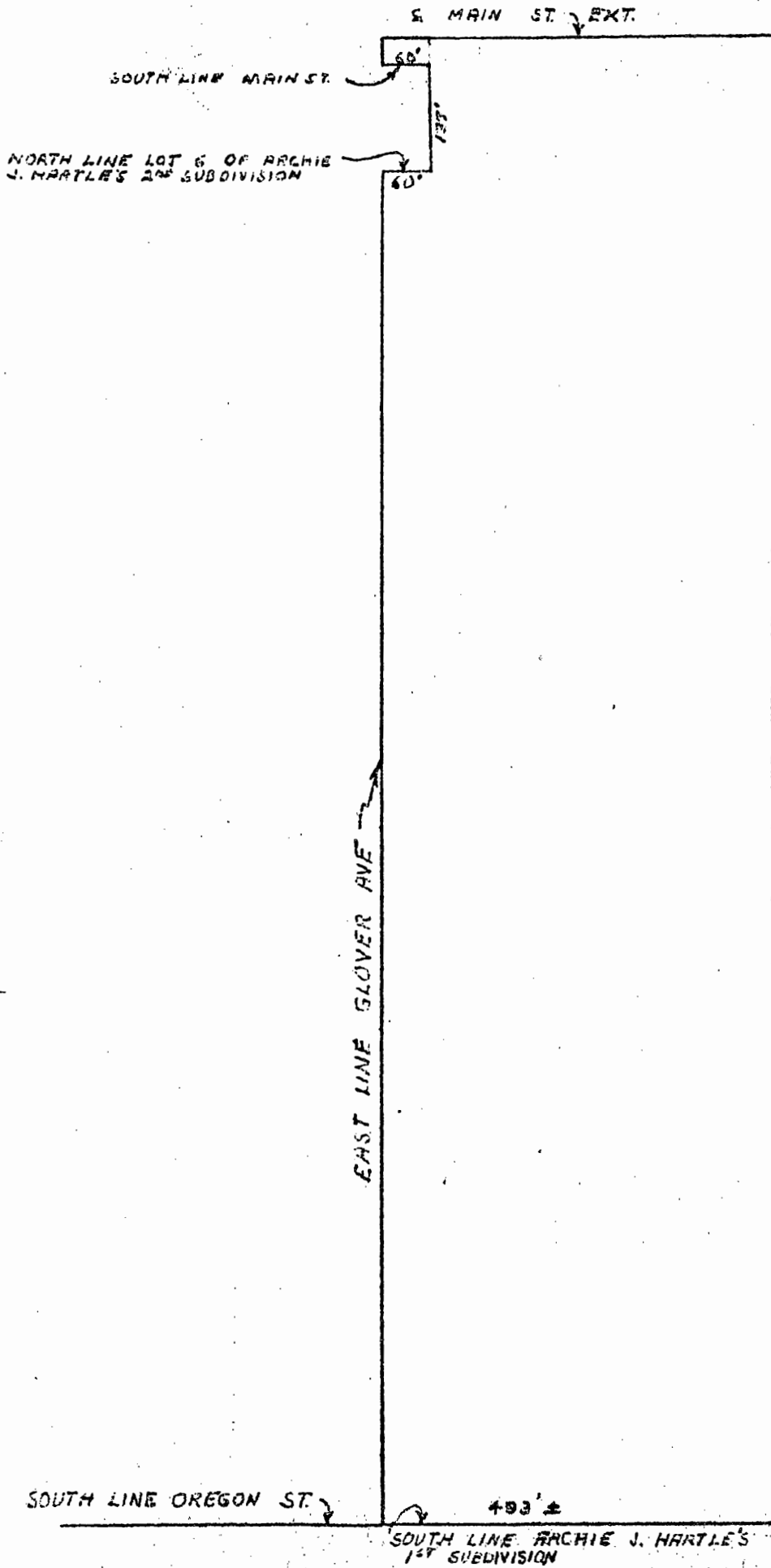
City Clerk

Approved by the Mayor this 21st day of April, A.D. 1958.



Mayor

ANNEXATION PLAT



SCALE 1"=200'



BY: M. H. KINCH, CITY ENGINEER
URBANA, ILLINOIS

4-23-58